

Volume 28 Issue 199

**MEETINGS: 8.00 PM  
THIRD WEDNESDAY  
OF THE MONTH  
IN CLUB SHED AT  
MONT De LANCEY  
71 Wellington Road  
WANDIN NORTH**



APRIL 2020

**YARRA VALLEY  
MACHINERY  
PRESERVATION  
SOCIETY  
INCORPORATED**  
BI-MONTHLY NEWSLETTER

# YVMPS NEWS

**Built for the man who demands the best!**

It takes time and care to make a beautiful garden. You can depend on it—no time is lost when fine lawns are kept velvet smooth with a Turner 18" 4-Stroke Rotary Mower. You can be sure of effortless, trouble-free mowing, year after year.

New power performance with easier operation, less maintenance and greater reliability put the new Turner 18" 4-Stroke years ahead of any other rotary mower in Australia.

Everything a lawn mower can do a Turner 4-Stroke will do better, faster and for years longer.

MODEL 4 M

**PRICE 73 GNS.**

complete with "Your Guide to Better Mowing" (Instruction Booklet), Guarantee Card, fuel can, lubricating oil can, tube spanner and Tommy bar.

Also Available  
TURNER 18" STANDARD      TURNER 18" AUTOMATIC  
Model 2M      Model 2A

**Price 58 gns.**

**FULLY GUARANTEED**  
and backed by expert service and spare parts from the manufacturer

**ASK FOR FREE HOME DEMONSTRATION**

Ask your dealer for a free home demonstration without obligation or phone your nearest Turner Office listed below.

VICTORIA, MELBOURNE	4023/1	LAUNCESTON	2-5754
N.S.W., SYDNEY	87 1316	HOBART	2-3323
NEWCASTLE	8-2278	PERTH	9-1785
BREBANE	38-4823	BERRY, N.S.W.	211
TOWNSVILLE	2957	BENDIGO, VIC.	3-5549

**SALES BROCHER FROM 1958 for the FIRST FOUR STROKE MOWER**

**"Craftsman or Learner the Choice is Turner"**

**See story page 4**

**EDITORIAL.**



It's a strange time isn't it? Truthfully, I don't mind being isolated but I guess were I younger, or a child in a small family it might not be fun. I saw an article about a mum collapsing into a shop complaining about supervising her youngster doing school-work, and saying she had never appreciated teachers before. The woman she spoke to was a teacher, at which point the mum bought her a cup of coffee in appreciation.

I am writing letters containing puzzles and other teaching sheets to my seven and five year old grandchildren, as their mum is working from home. She is in PR, and has two degrees, but no idea at all about what littlies do at school, and there are so many others in such situations too.

I have heard people talking about big clean ups and, being a neat freak that is always news I love, but there's not much to do here. While I'd love to I won't attempt to assist with cleaning the shed as I think it would make Niel all hot and bothered.

We did an odd thing the day before everything closed down. I saw an opera film of "La Boheme" advertised at Village Knox, so off we toddled, to a foyer with one other patron and two people serving. We got tickets, got seated in the cinema, the lights went down, the ads came on, finished and the lights went up! Eventually Niel went off and queried someone, who said the lights went out in the projection box, apologized and gave us ice cream and coffee, then screened the film to an audience of TWO!! I loved it anyway, which was a benefit.

So, get out and do something at home while the weather is kind, then hibernate till things change.

Best wishes, Heather and Niel .Editors.

The team who open our shed to the public and school children each week have been very busy during the first



couple of months but as with every thing that involves groups of people it has gone very quiet. We are told it will be 6 Months before Australia gets back to normal . Hang in there fellas .

**Removing a Broken Tap**

Broken Taps that get lodged into a workpiece can be removed without damaging the component. Many methods are employed, the most common being :

- Using a Tap Extractor, e.g. WALTON®.
- Electrodischarge Machining (EDM) / (Spark Eroding).
- Using a Tap Disintegrator.
- Welding a Nut onto the protruding part of the Broken Tap.
- Drilling out the Broken Tap using a Solid Carbide Drill Bit.

**Drilling Out a Broken Tap using a Solid Carbide Screw (Tap) Drill**



Broken Tap lodged in the Workpiece



Solid Carbide Screw (Tap) Drill

This drill is specially designed for drilling out broken taps and other materials with hardness ≤ 72 Rc. Recommended drill speed : 1500 - 3000 rpm. No coolant necessary.

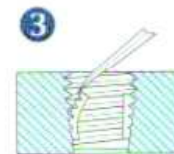
**PROCEDURE**



**1** Using a Ball Nose Carbide Rotary Burr, grind a semi-circular indent into the core of the broken tap. This provides a centre-point (seat) for locating the Solid Carbide Screw (Tap) Drill bit and prevents it from wandering. This operation is very critical to the success of subsequent drilling.

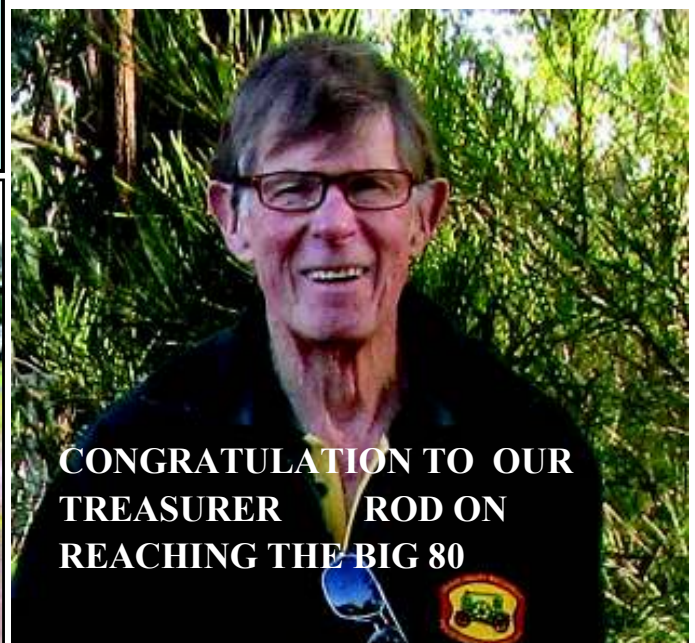


**2** Using a suitable diameter Solid Carbide Screw (Tap) Drill at a speed of 1500 to 3000 rpm and a steady and continuous manual feed, drill out the core of the broken tap. Clean out the swarf and any broken chips of the tap with compressed air at regular intervals during the drilling operation. This process should only be carried out using a rigid setup with the workpiece solidly clamped in a vice & preferably be done on a Milling/Drilling machine. No cutting fluid is required.



**3** Using a Scribe or sharp instrument, remove the remaining pieces of the tap. Clean out the tapped hole with compressed air and retap the hole again.

The article above was taken from the 2002 Engineers Black Book 2nd edition



**CONGRATULATION TO OUR  
TREASURER / ROD ON  
REACHING THE BIG 80**

Our member of the month is **Gavin Leigh Orr**. I was born in the Fern Tree Gully Hospital on 4th May 1978, and I have two younger sisters Michelle and Melaney. Wendy, my partner of six years was born on 11. November 1978 and we have three children, April 4, Warner 2 with No 3, Lincoln being born 26.3.2020. I attended Templeton primary school, from there on to the Ringwood Tech. Leaving at the age of seventeen I gained an electrical apprenticeship with Twin Electrics and worked there for nineteen years. Prior to starting my own business "Orrsome Electrics" in 2010.



I became interested in engines after talking to the editor of this magazine in 2015 at The Melbourne Steam Festival who was displaying his favorite Cooper engine. At that time Niel told me he had another Cooper engine as "work in progress" so I kept at him to let me know when it was finished as I would love to have an open crank engine of my own. When the engine was finished, which I had agreed to purchase, I called around to pick it up, Niel said he had got some **good news** and some **bad news**. The bad news was that the engine did not perform well and was hard to start. I was so disappointed, as you can imagine. "So what is the **good News?**" I asked. He reluctantly offered me his own Cooper for the same price that we had previously agreed on. **I joined YVMPS** at the very next meeting in 2016. I now have several engines, three of which are the Cooper, a Lister Junior, and a Bamford.. **One of my Hobbies is** working on our holiday house at Howqua **The real high lights** of my life have been meeting Wendy and having a family, and being able to spend time together at Howqua in the bush with out any technology, no phone, no TV, and plenty of bush for the family to enjoy.

In regards to my other hobby, my **Suzuki Mighty Boy**: These cars were only built for three years and were the smallest production ute. They were brought into Australia for holiday rentals around Queensland and the Gold Coast for holiday makers to zip around town and pick up shopping or go to the beach. I took a standard 1985 Suzuki Mighty Boy which had a three cylinder 550cc three speed auto and modified it by importing a half cut 1991 Suzuki Alto Works (these were Japans version of the WRX as they have strict emission laws, they were restricted to these vehicles being under 660CC). The Alto was an all wheel drive 660CC three cylinder fuel injected twin cam turbo charged inter cooled packet of joy. I managed to graft the full dash and instrument cluster into the Mighty Boy which looks amazing, giving a 90's look to the inside of the car and also managed to modify and fit the front and rear bumper to the Mighty Boy giving it a unique appearance. Fitting the engine was quite challenging, as the Alto was originally an all wheel drive., which I had to convert it to a front wheel drive. I played around with a heap of gear boxes and found a Suzuki Swift GTI gear box to be the one that would fit the closest. I had to design and manufacture my own adaptor plate to join the gear box to the engine and ended up using Mighty Boy drive shafts. Also, the brake booster from the Alto could not be used so I ended up using a standard Suzuki Swift brake booster with the GTI vented discs on the front. The original Mighty Boy motor came out of the factory with 12kW and I managed to push the Alto engine out to around 68kW, I have done further modifications to this finely refined Alto engine by fitting a Suzuki Sport after market computer and turbo package which also includes an oil cooler, a moderner LSD which was custom made. I have also slightly increased the boost on the turbo. This car is weighing in at around 700kg, so the power to weight ratio is impressive. This car I had fully engineered and is now on club registration, the only thing I didn't personally do on the car is the paint work as I have never attempted to paint a car before and felt that the project had come up so well, it deserved top quality paint work. This car doesn't get much use and might visit a car show once a year or so. The rest of the year it sits in the back yard museum for admiration.





### The Turner Four Stroke Mower.

Whilst I was working as a washing machine serviceman for Turner Mfg. Co. in Nunawading, the first four stroke motor mower was introduced to the market. It was powered by a Kirby 4 stroke side valve, 3.5 HP @ 4,000 RPM, 135cc (8.2 cubic inch) motor with a compression ratio of 5.7-1, single cylinder with bronze valve seats. All aluminum alloy motor body with cast in cast iron cylinder liner. It was while working for Turners that I was trained in motor mower repairs, valve grinds, new rings, etc.

The year was 1958, and you will notice the strange price of the mower is 73 GNS. Most household goods such as furniture and appliances were marked in guineas; one guinea was worth one pound and one shilling, therefore the mower was actually 75 pounds and 13 shillings (\$151.30). I recall that at the time petrol was around 4/6 (45c) a gallon.

Another interesting comparison is that while working for Turners all Serviceman had to supply their own vehicle, (mine a 1958 FC Holden ute) for which I was paid a car allowance of six pounds fifteen shillings (\$13.50) per week plus a petrol allowance of a Penny Farthing (1c) per mile on top of my weekly wage of nineteen pounds (\$38.00) so you can see that the mower would have cost me 4 week's wages.

Other household products produced by Turner's were floor polishers, automatic washing machines and Electric tumble clothes driers.

Turner's were also well known for their range of screw drivers and cabinet hardware such as kitchen drawer and cabinet door handles, along with a large range of wood working planes, almost identical to those made by Stanley in the USA. They made many other hand tools such as levels, tape-measures, hack saws, hammers and the famous Stanley knife.

In later years the factory was known as The Stanley Works producing a range of air tools for the automotive industry and also acquired Sidchrome spanners and tools.

A Harvey Norman store is now on the old Turner site in Nunawading. Their slogan was **Craftsman or Learner the Choice is TURNER** Ed.



### MELBOURNE STEAM FESTIVAL

Here to the left you will notice a Trouble Lamp hanging on the fence with the globe glowing brightly.

Also you may be able to identify the black Wiles portable steam boiler. These were made by Wiles Steel Structures of South Australia this one being built in 1973 for the Department of Army with a boiler pressure of 90 lbs

It is difficult to see but there is a twin cylinder air compressor which has been converted into a steam engine (using one or two cylinders as required) to drive a 32volt Generator which can be clearly seen hanging on a V belt..

The guy who built this started up the fire in the boiler midway through Saturday morning and by around 2.30pm on Monday it had built up enough steam to give me a demo. A lot of work for a small return.

#### Y.V.M.P.S. MERCHANDICE

Available at meetings and Rallies

Patches, Badges, Coffee Mugs, \$5.00 each,  
 Peak Cap \$10.00 Fridge Magnet, \$1.00 Pen, \$1.00  
 Club Shirts \$35.00 Windcheater \$40.00  
 See Heather Butcher

Melbourne Steam Festival March 2020



All these models have been made out of old Redgum fence posts.

**The Yarra Valley Machinery Preservation Society members** put on a good show over the three day weekend.

On Saturday we had David Ball with 9 Victa mowers, Rod Daniel had a MacDonald & Sundial, Niel Brain displayed a Lister D & Petter air cooled, Leigh Howes showed his 3HP International M, a Model steam powered launch as well as the 1931 Chevrolet Roadster. Tom Deveney had his immaculate 1906 6HP Pitt engine. (below) Jammie and Don Butcher set up a 5HP Lister, a 1910 Wolseley and an International Titan in the other compound along with John Baker and his 4HP Austral.

John, Jamie, Don and David packed up on Saturday night and after enjoying a great evening meal headed of home.

Alex Nad turned up for the Sunday with his trailer mounted Lister and Cooper engines.

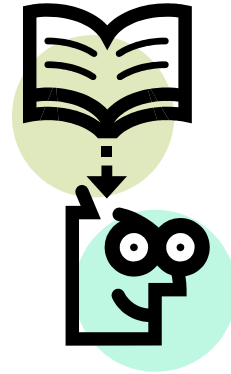
Rod, Niel, Tom & Leigh stuck it out for the three days and had a very relaxing weekend.

During the weekend we had visits from other members, -Barry Thomas, Max Holt, George Smith, Kieth Moar & John McIver. Ed.



**Due to the cancelation of the Yarra Junction Crank Up & the Kalorama Motor Rally  
Guess what ? I have a whole page to fill in with mind bending trivia.**

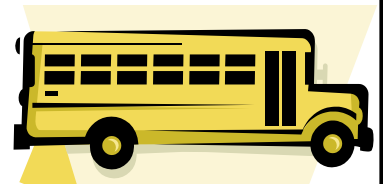
1. What is greater than God ? More evil than the Devil, The poor have it, The rich need it,  
And if you eat it you will die ?
2. What can travel around the world while staying in a corner ?
3. During which month do people sleep the least ?
4. I am tall when I am young and short when I am old.
5. What has a head and a tail but no body ?
6. What kind of room has no doors or windows ?
7. A man is pushing his car along the road when he comes to a hotel, he shouts "I'm bankrupt" Why ?
8. How many of each species did Moses take on the Ark with him ?
9. There were three men in a boat with 4 cigarettes but no matches. How do they manage to smoke ?
10. If there were three apples in a basket, and you take away two. How many do you have ?
11. There are five sisters in the room, Ann is reading a book, Margaret is cooking, Kate is playing Chess  
Marie is doing laundry, What is the fifth sister doing ?
12. What is full of holes but can still hold water ?



ANSWERS ON PAGE 8

*Well how did you go with that lot ? Just for laughs here is one more.*

13. Just imagine that you'r driving a Bus. At the first stop three people get on, the next stop five get on and one gets off, the next stop two more get on and two get off, next stop Five get on and none get off. The bus now travels express to the next town. Question?? How old is the driver



### INFORMATION WANTED

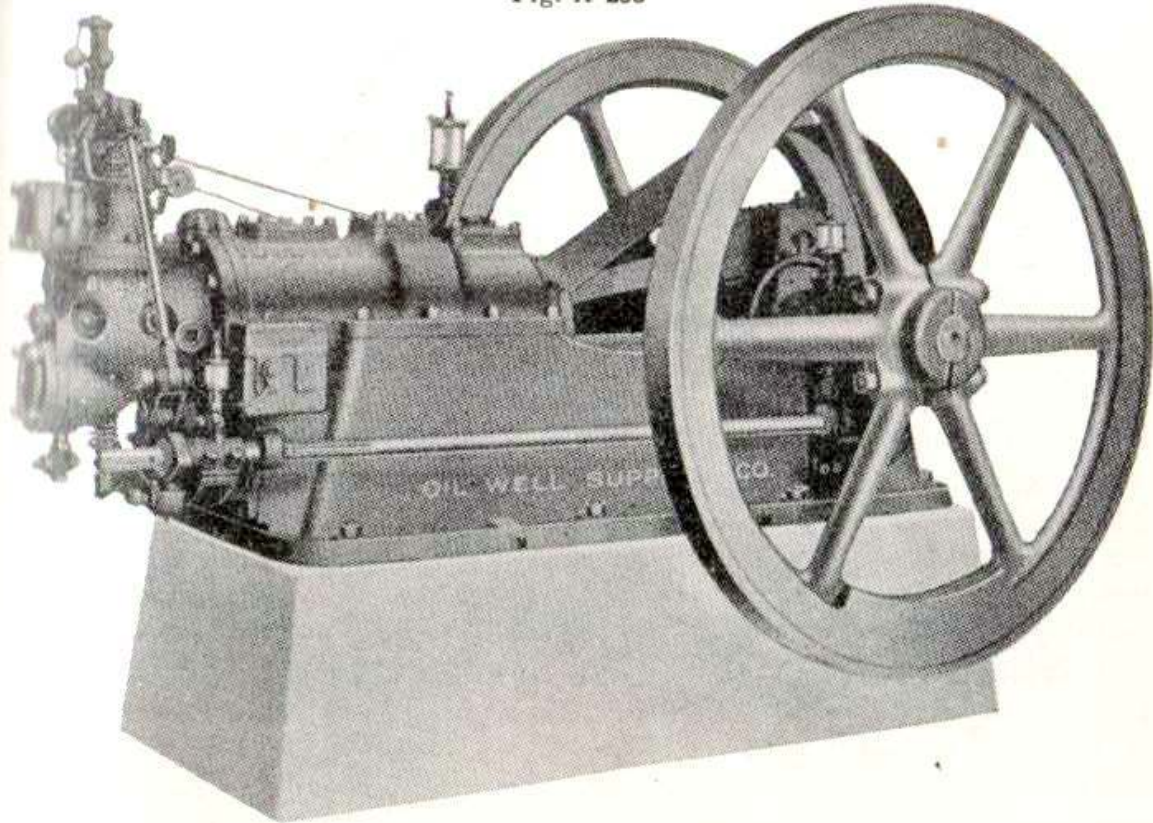
To the right is a picture of a portable power generator. It has a very powerful four stroke motor which has an electric start motor. I can not start it with a rope pull but it is no trouble with a powerful electric drill on the crankshaft nut. I believe it to be 12-32 Volt. The generator is driven by twin drive belts. You will notice hanging on the frame next to the fuel tank is the cover from the fly wheel cowling. The unit is painted in a grey similar to what the Navy might use. It has no identifying marks. Does anyone have any info on the unit. Please contact Niel Brain 03 9878 7929.



## GAS, GASOLINE AND OIL ENGINES

### BLACK BEAR GAS ENGINES

Fig. A-233



	25 H.P.		35 H.P.		40 H.P.	
	Weight lbs.	Price	Weight lbs.	Price	Weight lbs.	Price
Engine only.....	6,614	\$1430.00	8,614	\$1830.00	8,849	\$1875.00
Clutch magneto ignition.....	50	120.00	50	125.00	50	125.00
Flame magneto ignition.....	35	75.00	35	77.00	35	77.00
Hot tube ignition.....	5	9.50	5	9.50	5	9.50
Slide and break ignition.....		Prices upon application				
Centrifugal pump.....	37	35.00	37	35.00	37	35.00
"    "    pulley.....	30	16.00	30	16.00	30	16.00
"    "    belt.....	4	13.00	4	13.00	4	13.00
Photo to enclose crank (see page 236)	65	90.00	70	115.00	80	120.00

Note:—"Engine only" means engine less all items listed above, also less clutch pulleys. For clutch pulleys, see pages 235 and 250-262.

#### SPECIFICATIONS

	25 H.P.	35 H.P.	40 H.P.
Revolutions per minute.....	180	180	180
Stroke..... inches	11	12	13
Bore..... inches	18	20	20

**COMING EVENTS**

Sorry to say no more club meetings or working bees until further notice.  
Do as you are told **STAY AT HOME.**  
Better still **STAY IN THE SHED.**

Membership Fees

<b>Once only Joining</b>	<b>\$5.00</b>
<b>Insurance &amp; NHMA levee</b>	<b>\$20.00</b>
<b>Annual membership</b>	<b>\$30.00 (plus ins.)</b>
<b>Associate (Wife)</b>	<b>\$10.00 (plus ins.)</b>
<b>Junior/ student (10-18yrs)</b>	<b>\$7.00 (plus ins.)</b>

**BUY, SELL & SWAP.**

**MOST ACTIVITIES HAVE BEEN CANCELLED UNTIL FURTHER NOTICE**



**Answers to puzzles on page 6**

- 1.Nothing. 2 A postage stamp. 3 February (least number of days) 4 A Candle. 5 A Coin. 6 A Mushroom. 7 He was playing Monopoly. 8 None . Moses was not there, it was Noah. 9 They throw one cigarette overboard and made the boat a cigarette lighter. 10 Then you have two of course. 11 Playing Chess with Kate. 12 A sponge. 13 Same age as yourself, (You were driving the bus.)

*YVMPS COMMITTEE 2019/2020*

President	Stuart Bennett 16 Lester St. Woori Yallock 3139	5964 280
Vice President	Don Walker 10 Mitchell Rd. Lilydale 3140	0409 239 992
Secretary	Alan Shepherd 18 Rand St. Greensborough 3088 Email: aksurgical@hilink.com.au	9434 6681 9432 9500
Asst. Secretary	Jim Bennett 1773 Warburton Hwy. Woori Yallock 3139	5964 7570
Treasurer	Rod Daniel 11 Tasman Ave Nunawading 3131 Email :wrdaniel@optus.com.au	9878 7627 9878 7929
Vice Treasurer	Niel Brain 4 Lynne Crt Nunawading 3131 Email: nhbrain@tpg.com.au	5964 2791
Committee	Lewis Carlton 2 Penola Dr. Seville 3139 Email: screwlews56@gmail.com Barry Thomas 4 Tony Plc. Mooroolbark 3138 barry.thomas@cgi.com Jamie Butcher 7 Doongala Rd. The Basin3154	9726 8673 9762 1711 9762 7112 5964 2791
Librarian	Don Butcher 32 Marland Rd. Boronia 3155 Lewis Carlton 2 Penola Drv. Seville 3139	9762 7112 5964 2791
Newsletter Editors	Niel & Heather Brain 4 Lynne Crt Nunawading 3131 Email : nhbrain@tpg.com.au	9878 7929
Public Officer	Alan Shepherd 18 Rand St. Greensborough 3088 Email: aksurgical@hilink.com.au	9434 6681 9432 9500
Merchandice Officer	Heather Butcher 32 Marland Rd Boronia 3155	9762 7112

**DO NOT CLIMB OVER COMPOUND FENCING. BE SURE TO USE THE GATE!**

**We recommend & use**



m | 0412 466 776  
t | (03) 8873 2000  
f | (03) 9872 5588  
e | collind@anderson-assoc.com.au  
PO Box 408  
Ringwood VIC 3134  
Suite 102, 27 Heatherdale Road  
Ringwood VIC 3134

The newsletter will be produced bi-monthly and posted, one copy per member household. A **SUBS DUE** stamp will appear on the June issue. If payment is not received, the August issue will also be stamped. Without payment you will not receive further newsletters. If you require an extra copy, are not receiving the newsletter or your address has changed, inform the Editor.

Your Committee will not enter into any debate through the newsletter on the 'politics' or general running of the Society, as such matters are for general meetings.

The Editor of the YVMPS Inc. newsletter welcomes freelance contributions of a high standard. Articles may be on CD, memory stick, typed or clearly handwritten on one side of the paper only with the authors name and title of the article on each numbered page.

Whilst the Editor will exercise due care, no responsibility is accepted for any errors or omissions and retains the right to edit articles as needed.

**The Society and its elected representatives accept no responsibility for the accuracy of statements or opinions expressed by freelance contributors.**

**Copy deadline:** Any item for publication must be in the Editors possession no later than the monthly meeting prior to the month of issue. Issue Months, Feb., Apr., Jun., Aug., Oct., Dec.

© Yarra Valley Machinery Preservation Society Inc. 2020

Material in this publication may not be reproduced without prior written permission from the publisher.